

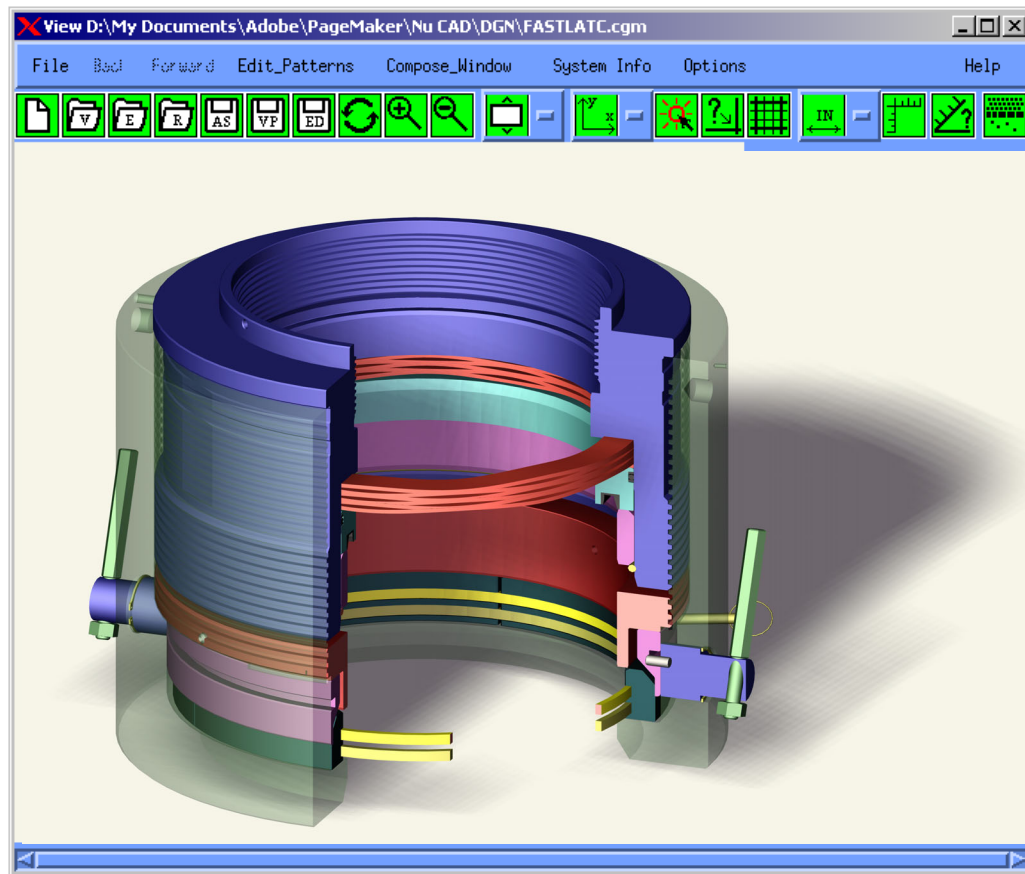


SDI Montage

SDI Montage is a desktop publishing tool for UNIX desktops.

Montage is a graphics editor for Drafting Professionals who need to add, change or remove graphic elements in Computer Graphics Metafiles. Enhancing line weights, removing odd text, and deleting rogue graphic elements for pre-publishing clean up are typical applications for SDI Montage.

Combine your graphic data into a powerful display



CAD Professionals use a wide variety of applications to analyze and design products. Upon completion of your data analysis project, you are faced with the task of presenting your various graphic images in a comprehensive display. Montage gives you the ability to import multiple graphic pictures of various formats into a single comprehensive display for technical publications.

Montage includes an extensive publishing tool set for markup, text editing, fonts, symbols, cropping, scaling, and layout to “dress up” your display for business meetings, poster sessions, and technical presentations.

Contact SDI for an evaluation



SalesUS@sdicgm.com
1 713-266-5667



SalesUK@sdicgm.com
+011 44-1732-369988

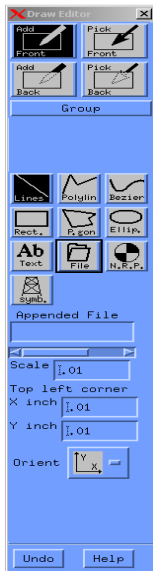


sdbj@sina.com
+011 86 10-8200-5004

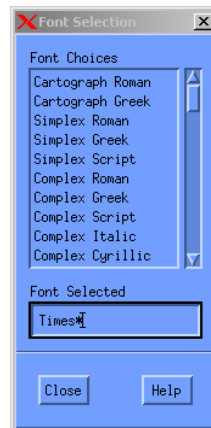
Markup and Highlight Tools

Add shapes, lines, symbols, colors, patterns and text to your display.

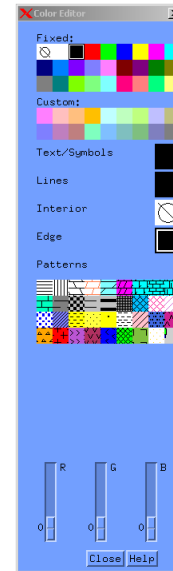
Draw Editor



52 Adobe & CGM PIP Fonts.

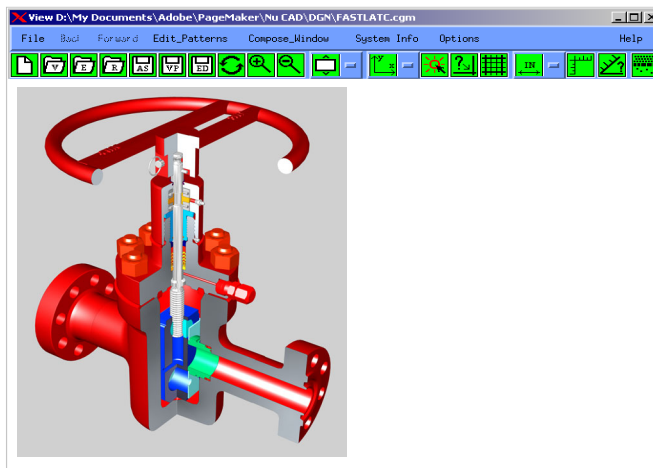


Color Editor



File Layout and Manipulation Tools

- Position
- Rotate
- Scale by %
- Crop



- Auto Align
- Reference Point Align
- Group objects

Import Options: CGM, Postscript, TIFF, JPEG, PDF, RGB, XWD, HPGL.

Export Options: CGM, Postscript, PNG, JPEG, TIFF, & XWD.

CGM Edit Option: Change primitive elements in a file.

Platforms: AIX, HPUX, IRIX, LINUX, & SOLARIS